



In an effort to improve the diversity of recreational activities at Pomme de Terre Lake, the U.S. Army Corps of Engineers (USACE) along with 12 partners developed an Archery Range.

The archery range is located near the Project Office on the east side of the dam. It features a covered shooting house with handicap accessible lanes leading to 6 targets. The first four targets are placed at distances of 20, 30, 40 & 50 yards. The last two targets are placed at 10 & 15 meters for schools/students that participate in the National Archery in the Schools Program. The range is free to the public and available on a first come, first served basis.

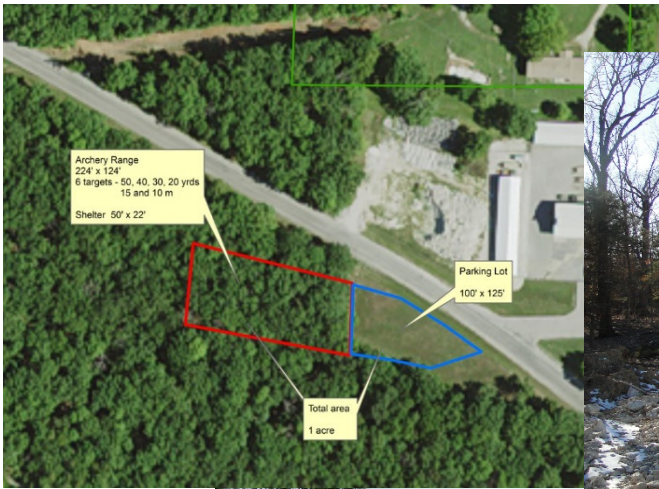


Archery Range – August 2016

All of this would not be possible without these partners; National Wild Turkey Federation, Skyline Elementary School, Hermitage High School, Wheatland High School, Weaubleau High School, Blooming Hickories 4-H Club, Missouri Department of Conservation, Flambeau Outdoors, Lucas Oil Speedway, Pomme de Terre Arms and VFW Post 938. These agencies and groups helped by volunteering, purchasing supplies and materials and the application for the Handshake Partnership Funding.

This is the only archery range of its kind in the surrounding areas. The Corps plans to hold archery clinics in the future. This will help to introduce people in the community to the outdoors and the sport of archery.

Before, During and After photos



Removal of Trees and Site Leveling



Constructing the Shooting House





Pouring shooting lanes, building target houses and installing fence



Targets in place and grass seed covered with straw.



Archery Range and Parking area are completed. 4-H club at Grand Opening on April 2, 2016.